

ROUND THREE 2016 NATIONAL WATERSKI RACE



INFO PACK

**Westbay, Dorset
17th July 2016**

Welcome to Round Three of the 2016 National Waterski Racing Championships.

This year the SWASC are proud to be hosting a national waterski race in Westbay, Dorset. This is the first time that an event like this has been held in this venue and the committee, council and harbour authorities have been working really hard to accommodate your needs.

We look forward to welcoming you all to what will hopefully be a new venue for us with a great social atmosphere.

Overnight camper spaces are available in a prime seafront location from Friday evening, strictly by prior booking only as spaces are limited and shared with OCR teams. It is a bargain at £50 per vehicle for the whole weekend. The view is amazing overlooking the harbour and sea front. See the officials list for the contact details.

We have toilets and shower facilities in the two hired chalets on the seafront inside the pits area. There are also public facilities dotted around the harbour area within a short walking distance.

Please note, this event is not exclusive to waterski racing and the OCRDA are hosting 4 powerboat races over the weekend. Two 40 minute races on Saturday and two 25 minute races on Sunday.

Drivers and observers will need to pay particular attention in the briefing as some bouys on Sunday may not be relevant to our course.

We are delighted to have this opportunity in having a fun packed racing weekend alongside Aqua Adrenaline.

TIME SCHEDULE FOR WESTBAY

Friday 15th July

Arrival of teams from 6.30pm – see map for directions of pits and camper area.

Saturday 16th July

Powerboat racing from approx. 12.00noon: two 40 minute races

Training or pleasure boating is available at your own launch costs – see harbour authority for details.

Note: You will not be able to train on the water during OCR race times.

12.00noon to 14.00 Signing in at The Salthouse and Scrutineering

Evening social: Perry Williams has organised a social within the village just a five-minute walk from the pits. This involves a band, vendors selling street food and even 'bring your own' alcohol and soft drinks. This is set to be a great evening!

Sunday 17th July

8.00am to 9.00am	Signing in and scrutineering – THIS IS BY PRIOR APPOINTMENT ONLY For scrutineering slot email: sbenny@madasafish.com ; Signing in Slots email: skiracesignin@hotmail.com
09.00am	Rescue boat briefing – at the Salthouse (see map)
09.30am	Race Briefing – at the Salthouse (see map)
10.15am	Launching of competitors
11.00am	Britkids A and B race (15 mins plus one lap for Britkids B)
11.30am	Support Race Start (35mins plus one lap)
12.15pm	OCR Powerboat Race (20 minutes)
13.45pm	Main Race Start (50mins plus one lap)
14.45pm	OCR Powerboat Race (20 minutes)
17.00pm	Presentation at the Salthouse

All these are subject to possible change without prior notice

OFFICIALS FOR EVENT

Race Organiser: Steve Benny

Safety Officer: Rob Solomon

Chief Judge: Tony Williams

Rescue Boat Co-Ordinator: Garin Cope

Timekeeping: Julia Ellis and BWSW Team

Signing In: Julia Olinski and Alison Smith

Scrutineer: Steve Benny & Rod Hawkins

Launch Co-Ordinator: Steve Bird

Course Marshalls: James Bartlett and Garin Cope (inc Westbay Harbour Master & Bob McCarthy)

Start/Finish Boat: Garin Cope and Richard Strick

Medical Cover: Vicky Blackmore (paramedic)

Rescue Boats: Garin Cope; Bob McCarthy & Aqua Adrenaline team

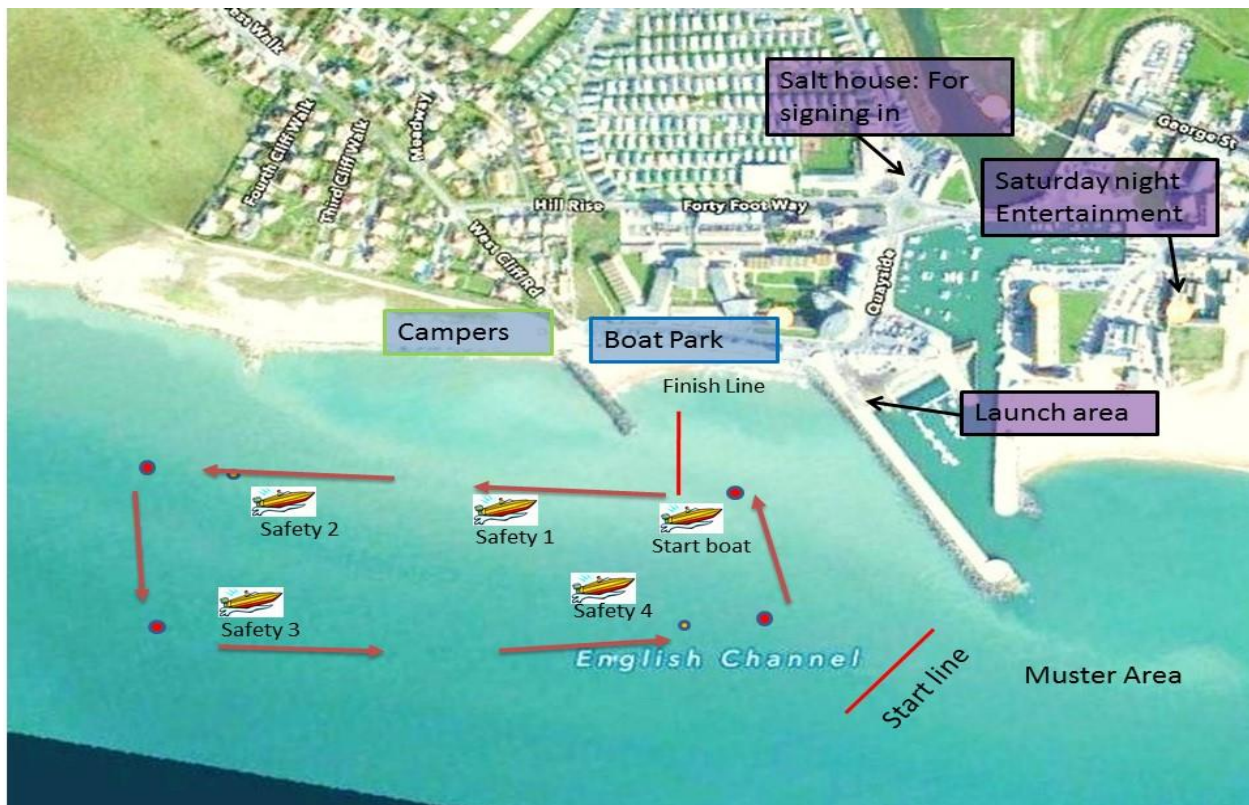
Camper Park Organiser: Cathy Bird – c.l.bird@talk21.com

Commentary: Chris Wreford & Pete Butler (and Cathy Bird supporting)

Social Co-Ordinator: Perry Williams

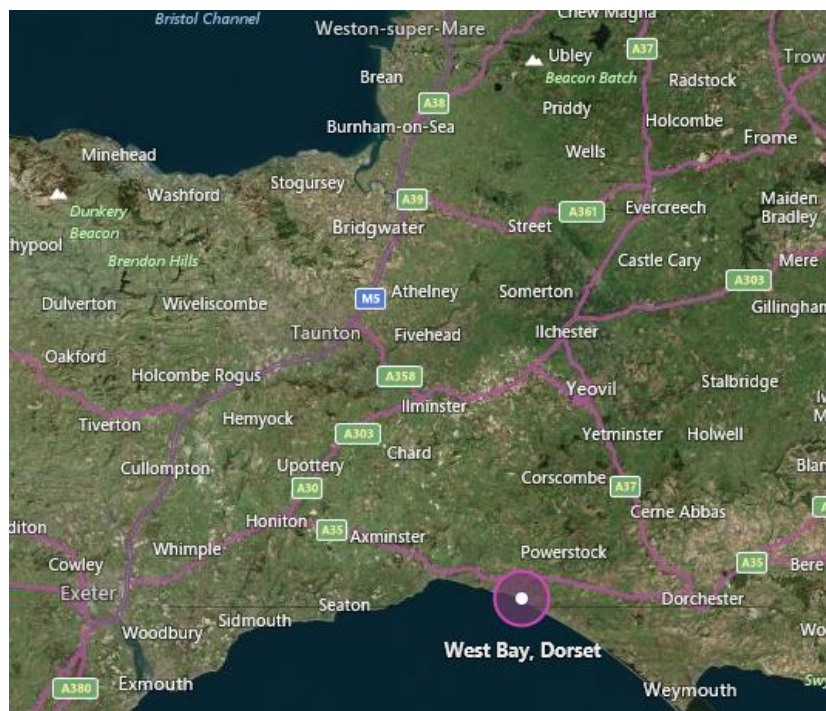
Fire Marshall: Alex Benny

Proposed Course



Location of Venue

Westbay is located near to Lyme Regis.



Follow the signs for Westbay and when you come into the village, head for the beach and harbour. The road block will be right by the harbour at the roundabout – when you get there contact Steve Bird 07967 292614 or Steve Benny 07736 346250 or Garin Cope 07836 779510 and one of them will assist you through to the pits and camper park.

Local Accommodation

The tourist information site is: <http://www.westbay.co.uk/accommodation/westbay.php>

Bridport is 20 minutes away but there is a large camp site and many holiday lets in Westbay itself.

Fuel

Please ensure you have enough fuel for all of your races as there are no filling stations in the village. Refuelling in between races can be done either on the pontoon/slipway or in the pit area. If you are refuelling in the pit area, please ensure you get a brief sheet and Method Statement from Alex Benny prior to commencement. This will be available in race briefing. A spill kit is on hand and any spillages MUST be reported immediately so the appropriate action can be taken.

Vacating The Pits and Camper Area

We kindly ask you that ALL rubbish is either taken home with you or placed in bin liners, which we will provide. Please put them in the local bins. This is an area of outstanding natural beauty and we have a duty of care to make sure we leave it as we found it so we get invited to come back in the future.

Publicity

We will have a professional photographer at the venue taking publicity photographs. The SWASC/Aqua Adrenaline & local Authority have been working hard to publicise the event as this is a popular holiday destination and this is the first weekend of the school summer holidays, so we are hoping for a good turnout of spectators to cheer you along.

Harbour

There is a floating pontoon by the slipway and can be used for mooring once launched. This is easily accessible by foot, once your boat is moored.

Launching

Launch is being provided by the experienced team that is normally used at Lyme Regis. The slip and harbour lend themselves to less tidal restrictions than other venues, hopefully facilitating less troublesome launching and recovery.

Facilities in Westbay

There are plenty of establishments to enjoy the local food and drink throughout the weekend whatever your taste or budget. We recommend you have a walk around the town and enjoy the weekend.